

IQ® Air Conditioners *on cue for you*



Axial Fan



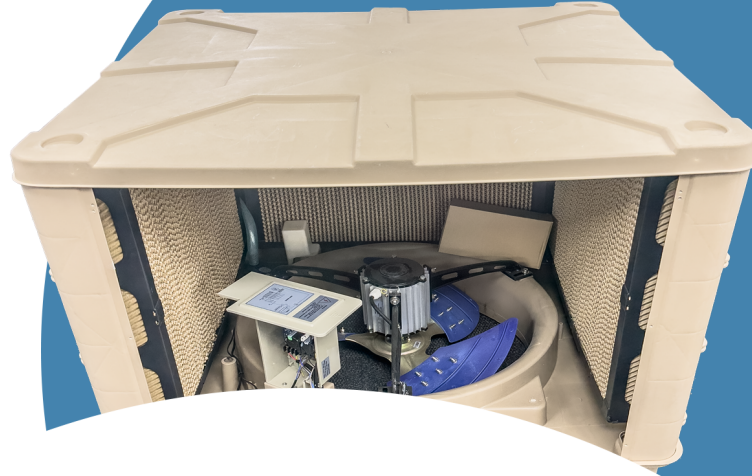
Low Noise level

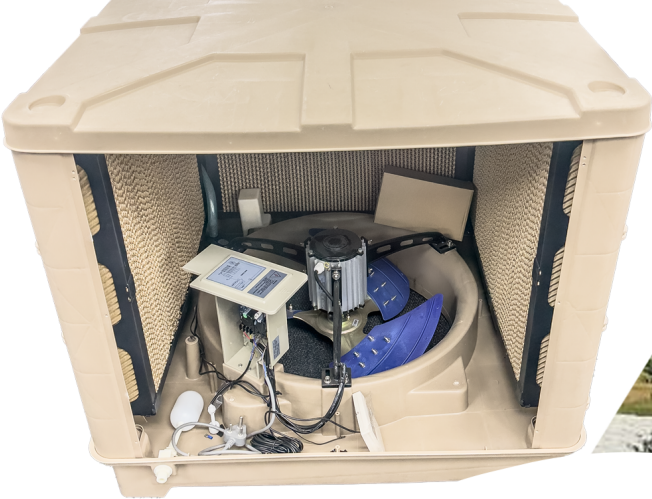


Remote Control



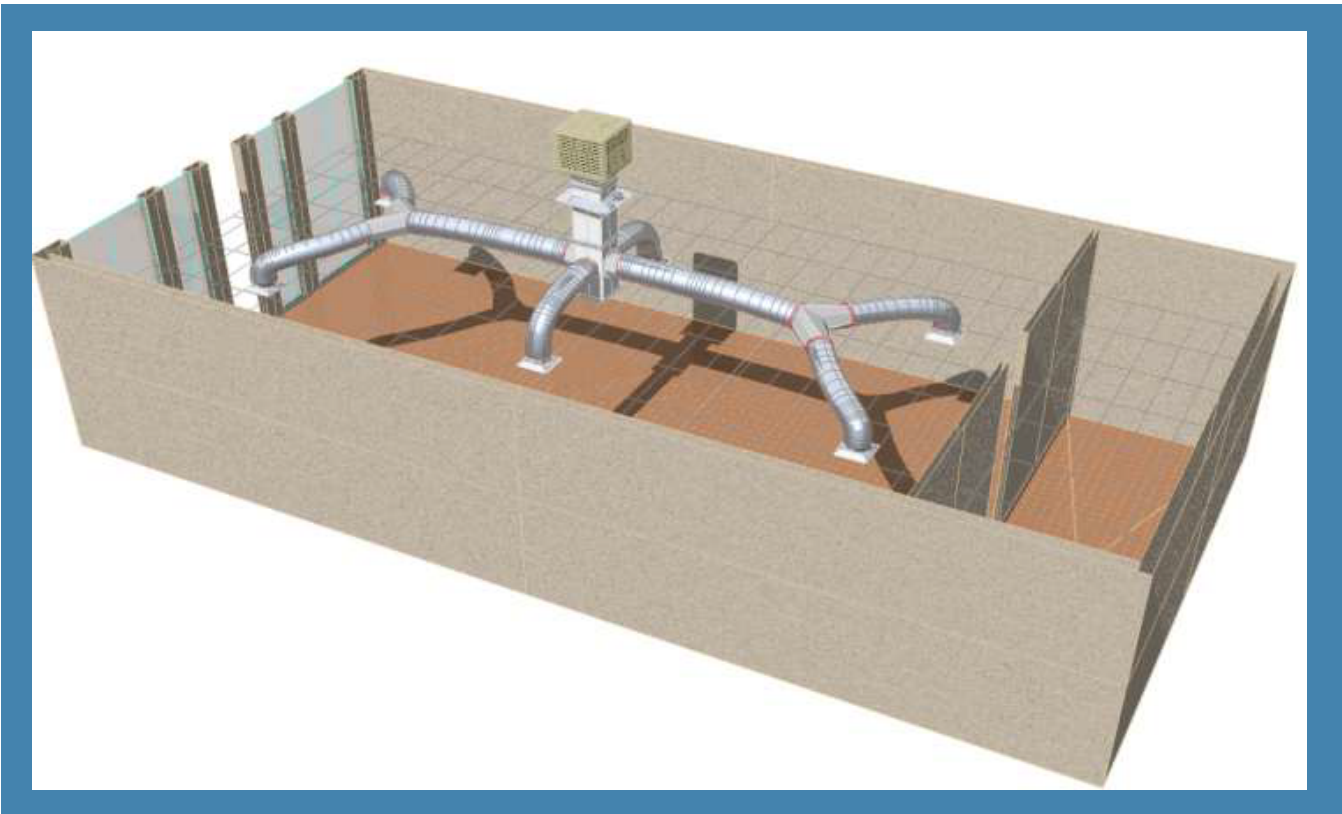
Up to 30L Water Tank





SPECIFICATIONS

Model	EC-18GB	EC-25GB	EC-35GB
Airflow(M3/h)	18000	25000	35000
Power (W)	1100	1500	3000
Fan type	Axial	Axial	Axial
Water tank(L)	30	35	120
Power Resource(V/Hz)	220 ~ 240/50	220 ~ 240/50	220 ~ 240/50
Control type	LCD + Remote	LCD + Remote	LCD + Remote
Weight(Kg)	80	90	130
Dimensions(mm)	1050*1050*920	1080*1080*950	1300*1300*1300
Water Inlet	Auto	Auto	Auto
Pump Protection	Yes	Yes	Yes



TYPICAL COMMERCIAL APPLICATION

